

JESPY HOUSE PRESENTS
A SPECIAL SYMPOSIUM

AGING in PLACE

Innovative Strategies
to Support Adults with
Intellectual/Developmental
Disabilities

**October
11 & 12
2018**

Professionals working
with the I/DD population
or family members of an adult
with I/DD will not want to miss
JESPY House's Inaugural Symposium
on Aging in Place with I/DD.

South Orange Performing Arts Center | South Orange, NJ 07079

Register Online at: jespyhouse.org/symposium2018



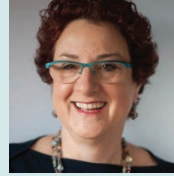
ADVANCING INDEPENDENCE FOR ADULTS WITH DISABILITIES

40
Years
of service
1978-2018

Dear Professionals, Families and Caregivers:

JESPY House, dedicated to serving adults with intellectual and developmental disabilities for 40 years, is enormously proud to host:

Aging in Place: Innovative Strategies to Support Adults with Intellectual/Developmental Disabilities.



The first of its kind in the Northeast, our symposium brings together renowned educators and national experts to share the latest information on health trends, policy, research, employment, community-based supports, and more, all of which impact the aging I/DD population. *Our symposium is especially relevant today as adults with I/DD are living longer than ever before and the number of adults with I/DD will double by 2030.*

Participation will provide attendees with the most current information on:

- Identifying age-related health changes
- “Fatal Five” physical conditions
- Techniques to screen and assess for dementia
- Options for employment and volunteerism
- Creating a comprehensive future plan
- Building age-friendly communities to combat social isolation
- Ways to work across aging and disability fields to better support individuals with I/DD

At a time when our country’s aging population is increasing so rapidly – including the I/DD population – and we are learning so much more about people with I/DD – it is imperative that we hold forums like this to increase understanding and ensure better service.

We applaud our sponsors for recognizing the importance of advancing research and knowledge in this field, as well as the value of bringing together a wide variety of professionals, caregivers and family members for two days of important information exchange. Our sponsors’ support has made it possible for JESPY House to offer you this unique educational experience.

Don’t miss out on this very special symposium. Go to jespyhouse.org/symposium2018 to register today. Please note that all Symposium sessions are approved for continuing education credits for licensed social workers through the NASW-NJ Chapter.

Sincerely,



Audrey Winkler, Executive Director

Thank you to our sponsors for their generous support!

LEAD SPONSOR



CHAMPION SPONSORS



HERO SPONSORS



FOUNDING SPONSORS



THE POLOW FAMILY Proud Rental Agent to JESPY for 35 years



SUPPORTERS

Printing Techniques, Inc.
Salem Management Co.
Sobel & Co. LLC



Interested in providing sponsorship? Please email aengel@jespy.org.

KEYNOTE SPEAKERS



Tamar Heller, PhD is head of the University of Illinois-Chicago Department of Disability and Human Development and directs its University Center of Excellence in Developmental Disabilities for the State of Illinois. As Director of the Rehabilitation Research and Training Center on Aging with Developmental Disabilities: Lifespan Health and Function, Dr. Heller oversees a comprehensive research program focusing on health and wellness, later life family caregiving, and public policy and programmatic interventions to improve the life of adults with developmental disabilities as they age.



Matthew P. Janicki, PhD is research associate professor at the University of Illinois-Chicago Department of Disability and Human Development. Currently he is the co-chair of the National Task Group on Intellectual Disability and Dementia Practices (the “NTG”) and manages a longitudinal study of dementia capable group homes for adults with intellectual disabilities. Dr. Janicki is internationally recognized for his work as originator and chair of the IASSIDD Special Interest Group on Aging, and organizer of a World Health Organization Research and Policy Meeting.



Caitlin E. Coyle, PhD is research fellow and assistant professor of gerontology at the University of Massachusetts-Boston where she conducts applied research on the topics of social isolation and aging with lifelong disability. Dr. Coyle earned her doctorate in gerontology from UMass Boston and completed postdoctoral training at the Yale School of Public Health. Dr. Coyle’s work supports cities and towns in New England as they consider ways to build more inclusive communities: planning, development, and improvement to the services and supports being provided to older adults and people with disabilities.



Michelle Putnam, MGS, PhD is associate professor and associate dean for research at Simmons College School of Social Work in Boston, MA. With an emphasis on how public programs and public policy meet the needs of persons aging with disability, Dr. Putnam examines collaborations between aging and disability service providers and their dual capacity to serve this group’s long-term care and support needs. She is engaged at the national and international level in building bridges across the aging and disability fields and is Editor-in-Chief of the *Journal of Gerontological Social Work*.

BREAKOUT SESSION SPEAKERS



Holly L. Hardaway, OTR, CALA, CAPS is credentialed as an occupational therapist both in NJ and nationally, a certified aging in place specialist (CAPS), and NJ-licensed certified assisted living administrator (CALA). Her expertise in adult rehabilitation for over 30 years includes aging in place, hand therapy, home care, neurological rehabilitation, acute care rehabilitation and home modifications. Ms. Hardaway is also certified to deliver the evidence-based Skills2Care™ program by Jefferson Elder Care.



Craig Escudé, MD, FAAFP is the medical director of Hudspeth Regional Center serving people with I/DD, and the founder and clinical director of the Developmental Evaluation, Training and Educational Consultative Team (DETECT) program in Mississippi. This program provides resources, consultation and educational support to increase the availability of capable, competent and compassionate community-based healthcare for people with I/DD.



Colleen Beach, MSW, LSW is a specialist professor at Monmouth University School of Social Work who focuses on elder justice and community living options for older adults. For over 15 years, she has served older or vulnerable adults in adult medical day care, hospice, and rehabilitation facilities. Ms. Beach's memberships include the National Adult Protective Services Association Education Committee, American Society on Aging and National Committee for the Prevention of Elder Abuse.



Lori Norris is director of the National Center for Innovation and System Improvement at Fedcap, with over 23 years' experience in advocacy and educational/vocational services for those with disabilities and barriers to employment. She has significant experience in creating programs, services, policies and training to support the success of people with disabilities.



Ellen Nalven, MEd is the executive director of Planned Lifetime Assistance Network of NJ (PLAN/NJ) and board member of the National PLAN Alliance through which she educates families on the importance of life planning to promote independent living and quality of life for individuals with disabilities. She serves as legal guardian and trustee for special needs trusts and oversees the delivery of case management, advocacy and life planning services for over 600 people.



Ruth Loew Schildiner, MA CFLE, CAS is an expert in eating disorders/food addictions and healthy eating across all age groups and abilities. Formerly assistant professor of home economics at Montclair State University and with over 25 years of private practice and teaching experience, she blends evidence-based research with practical strategies to enhance the wellbeing of the health professionals she teaches and to help produce positive outcomes in their clients.



Margaret Gilbride, JD, CT is director of Transition, Employment, and Aging & Disability at The Rutgers-Robert Wood Johnson Boggs Center on Developmental Disabilities. Working in the disability field for over 25 years, Ms. Gilbride has conducted ongoing research and training related to the impact of aging, grief, and loss on people with developmental disabilities, with a concentration on bioethical issues they encounter in healthcare provision and end-of-life treatment.



JESPY Clinical LCSW Team conducts group and individual support counseling with our clients aged 45+ to develop coping skills, enhance social connections, and facilitate community integration. Their credentials include post-graduate certificates in Rational Emotive Behavior Therapy at the Albert Ellis Institute, Advanced Assessment and Diagnosis, and soon to be completed post-graduate certificates in Gerontology and Developmental Disabilities. Our team provides clinical insight and skills enhancement to members of our interdisciplinary staff.

Continuing Education Credits: The Aging in Place Symposium, provided by JESPY House, is approved for continuing education by the New Jersey Social Work Continuing Education Approval Collaborative, which is administered by NASW-NJ for approval period March 20, 2018 through August 31, 2020. Social workers will receive up to 10 CEU's for participating in this course.

PRICING	Non-NASW Member	NASW Member	Family Member of Adult with I/DD	Student
Through 7/15/2018	\$350	\$375	\$270	\$270
7/16/2018 - 10/5/2018	\$425	\$450	\$295	\$295
10/6/2018 - 10/11/2018	\$475	\$495	\$325	\$325

Register Online at: jespyhouse.org/symposium2018

SYMPOSIUM SCHEDULE

THURSDAY OCTOBER 11, 2018

8:00-8:30 Registration

8:30-9:00 Breakfast/Networking

9:00-10:30 **Keynote Speaker:** Tamar Heller, PhD - University of Illinois at Chicago
Challenges and Opportunities for Adults Aging with Intellectual and Developmental Disabilities

10:30-10:45 Break

10:45-11:45	Lori Norris, MEd Fedcap Best Practices for Adults Aging with I/DD - Options for Employment and Volunteerism	Colleen Beach, MSW, LSW Monmouth University Freedom from Abuse and Neglect-Our Right and Our Responsibility	Craig Escude, MD, FAAFP Hudspeth Regional Center, Mississippi The Fatal Five: An Overview of Preventable Causes of Mortality in Community Based Settings
-------------	--	--	---

11:45-1:00 Lunch

1:00- 2:30 **Keynote Speaker:** Matthew Janicki, PhD - University of Illinois at Chicago
Innovations in Services for Older Adults with Dementia

2:30-3:30	Ellen Nalven, MEd PLAN/NJ Securing the Future for Adults with I/DD	JESPY Clinical LCSW Team Indicators of Anxiety and Depression in Adults Aging with I/DD	Margaret Gilbride, JD, CT Boggs Center for Developmental Disabilities, Rutgers University Grief and Loss: Supporting Adults with I/DD to Navigate their Loss Journeys
-----------	---	---	--

3:30-3:45 Break

3:45-4:30 **Possibility: The Space Between Limits** - an inspirational documentary short that features a number of men and women with disabilities who have each found supportive partners and meaningful employment.

5:00-7:00 Networking Reception

FRIDAY OCTOBER 12, 2018

8:00-8:30 Check-In

8:30-9:00 Breakfast/Networking

9:00-10:30 **Keynote Speaker:** Michelle Putnam, MGS, PhD - Simmons College
Disability Policy and Challenges for Successful Community Based Services

10:30-10:45 Break

10:45-11:45	Craig Escude, MD, FAAFP Hudspeth Regional Center, Mississippi Dual Diagnosis for Adults Aging with I/DD	Ruth Loew Schildiner, MA, CFLE, CAS Nutritional Strategies for Adults Aging with I/DD	Holly Hardaway, OTR, CALA, CAPS Independent Domain, LLC Home Modifications for Adults Aging with I/DD
-------------	--	---	--

11:45-12:30 Lunch

12:30-1:45 **Keynote Speaker:** Caitlyn Coyle, PhD - University of Massachusetts
An Inclusive Approach to Building Age Friendly Communities

1:45-2:00 Collect Feedback Surveys; Distribute CEU certificates

102 Prospect St., South Orange, NJ 07079



ADVANCING INDEPENDENCE FOR ADULTS WITH DISABILITIES

HOTEL ACCOMMODATIONS: Discounted hotel rooms (\$159/night including complimentary breakfast and shuttle service to/from the Symposium) are available at: **The Wilshire Grand Hotel**, 350 Pleasant Valley Way, West Orange, NJ 07052. Call (973) 731-7007 no later than **October 8th**. Please mention the JESPY House Room Block for discount. (Other information: thewilshiregrandhotel.com)

LOCATION/TRAVEL INFORMATION: The Symposium will take place at: **South Orange Performing Arts Center (SOPAC)**, One SOPAC Way, South Orange, NJ 07079. The accessible NJ Transit South Orange Train Station and bus stop are mere steps away from SOPAC. Visit NJTransit.com for schedules, fares, and to map your itinerary.

PARKING: Limited free parking for Symposium attendees will be available at Sloan Street Lot #9, located opposite the train station at 1st St.

QUESTIONS? Please contact Tara Roberts, Symposium Coordinator at troberts@jespy.org or 973-762-6909, ext. 221.

AGING in PLACE
Innovative Strategies to Support Adults with
Intellectual/Developmental Disabilities